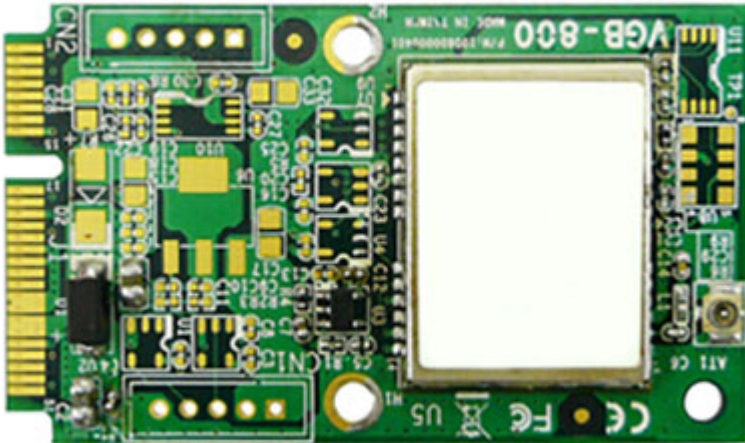


69.95 EUR
incl. 19% VAT, plus [shipping](#)



- GPS/QZSS, GLONASS, BeiDou !
- 72-channels !
- -167dBm SuperSense !
- 10 Hz Update Rate !

Support:  [Specifications](#) | [Drivers \(Windows\)](#)

Embedded u-blox M8 GPS Mini PCIe Card

Features :

- Concurrent Reception of GPS/QZSS, GLONASS, BeiDou
- 72-channel u-blox M8 Engine w/ Over 2 Million Effective Correlators
- 167dBm SuperSense® Acquisition & Tracking Sensitivity
- 10 Hz Position Update Rate
- Standard Mini PCIe V1.2 Full-Mini Card(USB2.0 Interface)
- Time To First Fix (TTFF) : <1 sec
- Operating Temp. : -40°C to 85°C

Specifications

| | |
|------------------------------|---|
| | Receiver Type |
| Chipset | u-blox M8 |
| Frequency | GPS L1 C/A, SBAS L1 C/A, QZSS L1 C/A, GLONASS L1OF, BeiDou B1 |
| Channels | Supports 72 Channels |
| | Sensitivity |
| Tracking & Navigation | -167dBm |
| Acquisition | -160dBm |
| Cold Start (Autonomous) | -148dBm |
| | Time to First Fix (TTFF) |
| Cold Start | 26 sec |
| Warm Start | 26 sec |
| Hot Start | <1 sec |
| Aided Start | <2 sec |
| | Accuracy |
| Horizontal Position | Autonomous : <2.5m CEP, SBAS : <2.0m CEP |
| Accuracy of Timepulse Signal | RMS 30ns |
| Max Navigation | 99% <60ns |
| Update Rate | 10Hz (GPS & GLONASS), 18Hz (GPS) |
| | Dynamic Conditions |
| Velocity | <500 m/s (972 knots) |
| Acceleration | <= 4g |

Output Message Format

GPS Protocol NMEA 0183 V4.0, UBX, RTCM2.3

Multipath Suppression

Type Intelligent multipath detection and suppression

A-GPS

Type Supports AssistNow® Online and Offline, OMA SUPL Compliant

Environmental Characteristics

Operating Temp. -40°C to +85°C

Storage Temp. -40°C to +85°C

Peak Supply Current Max=150mA

Max Performance Acquisition =74mA

Eco Mode Tracking = 43mA

Power Input 3.3V +-10% VDC input

Dimensions 51 x 30 (mm)

Ordering Information

Part Number VDB-810-000

Description Embedded u-blox M8 GPS Mini PCIe Card